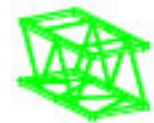


NOTES

Assemble central tower first, then assemble wing sections.

Flat side of saddle bracket attaches to header frame. Secure it to the horizontal, about 5" from leg, with the long pin.

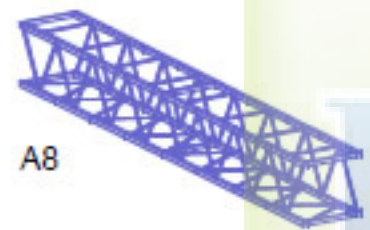
Box frame attaches between bracket and header frame



A2



A4C



A8



CCA



CCB



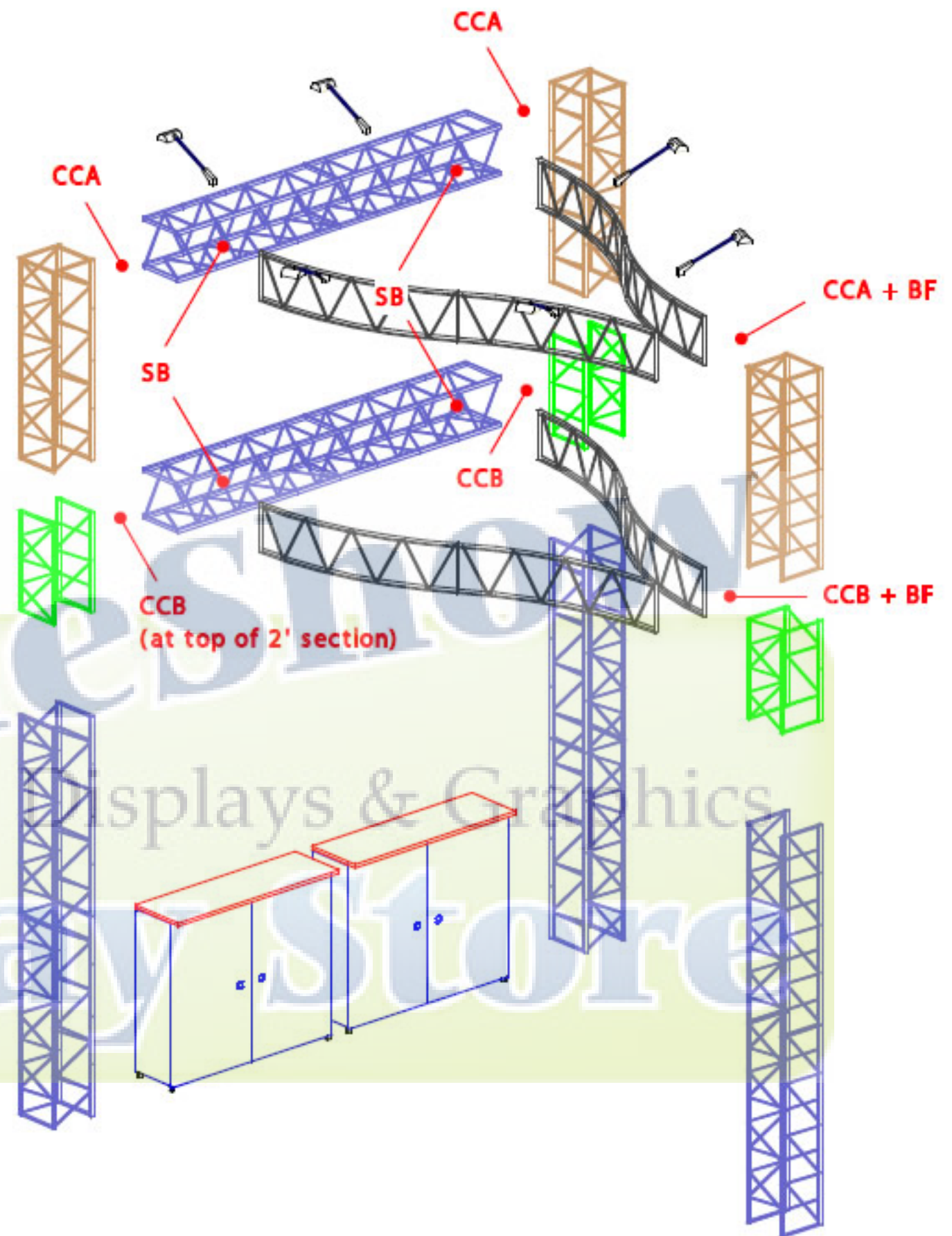
BF
(box frame)

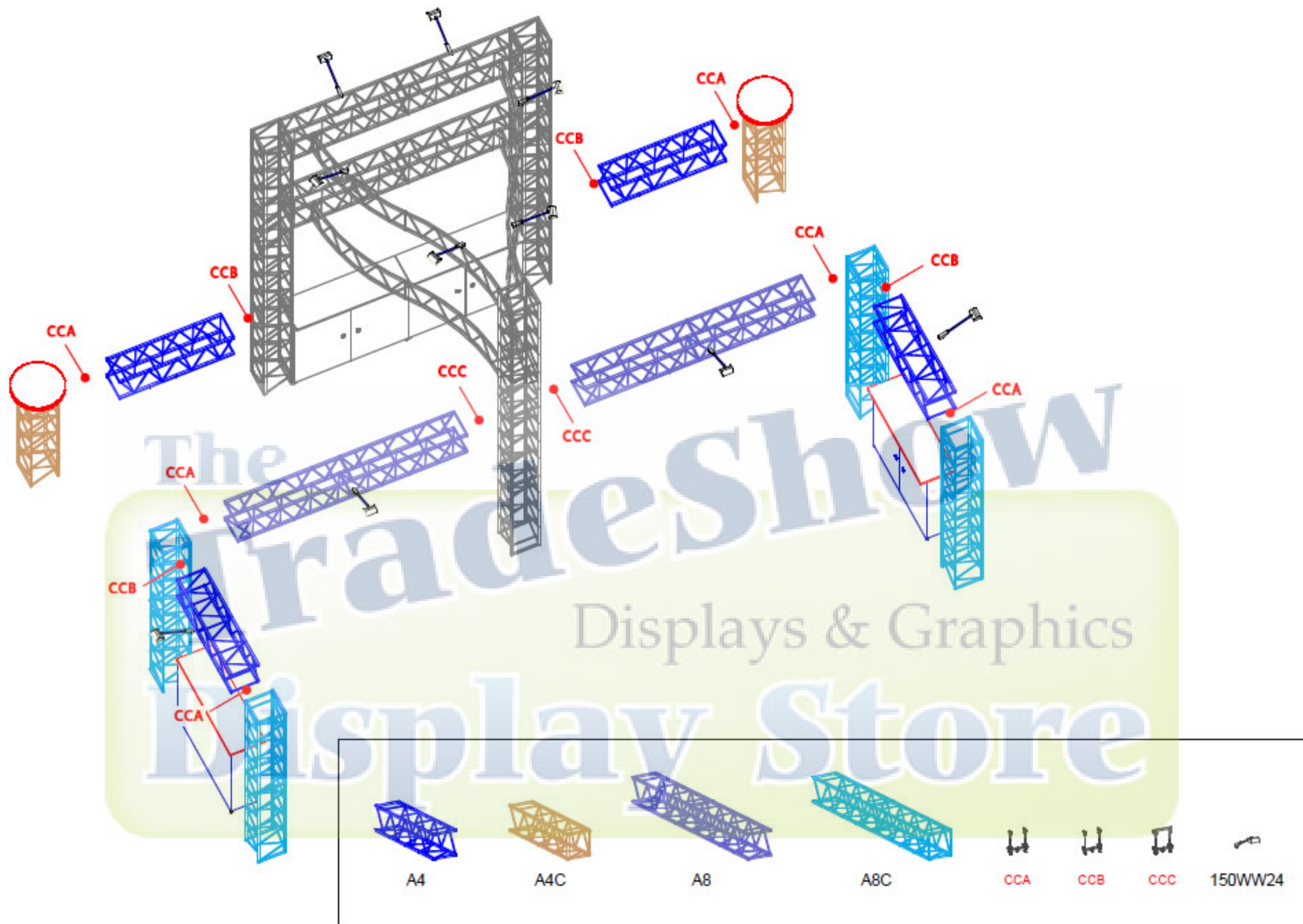


SB
(saddle bracket)



150WW24





The TradeShow Display Store, Inc. - 2222 Francisco Drive - Suite 570-341 - El Dordo Hills, CA 95752
 Toll Free: (888)-941-1202 - Telephone - (916)-941-1202 - Fax - (916)-209-9929